

#### 4. Sponsorships

Increase your visibility within the special needs community by selecting from among the following sponsorships. Partial sponsorships may be available upon request. Deadline for selecting sponsorships is January 1, 2006.

- \_\_\_ Conference Notebook \$4000    \_\_\_ Early Bird Hospitality Hour \$500    \_\_\_ Continental Breakfast \$2700
- \_\_\_ Conference Lunch \$5000    \_\_\_ Workshop Lunch \$3500    \_\_\_ Beverage Break \$700
- \_\_\_ Your Materials in Notebook \$500

#### 7. Badges/Registration

Registration is at the conference registration desk in the Doubletree Hotel at the entrance to Universal Orlando. The registration desk will be open from 1 to 6 pm on Friday, March 3 and will be open from 7 am to 5 pm on Monday and Tuesday. You will need your badge to enter the exhibit area, which is the Universal Center at the Doubletree Hotel.

#### 8. Total Payment

Summarize the options you have selected from cost items above to determine your total payment.

\$ \_\_\_\_\_ Exhibit Space (minimum 50% due now)    \$ \_\_\_\_\_  Check enclosed payable to Edupro Group

\$ \_\_\_\_\_ Balance due before December 30, 2005    \$ \_\_\_\_\_  Visa / MasterCard

Additional Exhibit Area Only Registrants

\_\_\_\_\_ @ \$75 each    \$ \_\_\_\_\_ Card # \_\_\_\_\_

\_\_\_\_\_ Sponsorship selection    \$ \_\_\_\_\_ Exp \_\_\_\_\_ / \_\_\_\_\_

TOTAL ENCLOSED    \$ \_\_\_\_\_ Signature \_\_\_\_\_

Please sign below and return this form with payment to Edupro Group, LLC, P.O. Box 6053, McLean VA 22106. If paying by credit card you may fax the form to 703 288-4089. All payments are subject to forfeiture if space is cancelled after December 30, 2005. Cancellation prior to that date is subject to a \$100 processing fee. Make check payable to Edupro Group, LLC. Visa and MasterCard payments are accepted.

By signing below you agree that, when executed with a payment, this agreement becomes a valid contract, binding both parties to its terms and conditions as stated here and below. Exhibitor agrees to hold the conference and its sponsors harmless of and from any and all claims for personal injuries and property loss and damage occurring on, arising out of, or in any way connected with demonstration or operation in the exhibit area of any equipment owned by exhibitor. Exhibitor agrees to comply with the operating policies, fire regulations and other applicable procedures as set out by the Doubletree Hotel, copies of which are available upon request.

Signed: \_\_\_\_\_ Title: \_\_\_\_\_

Date: \_\_\_\_\_ Phone: \_\_\_\_\_ Fax: \_\_\_\_\_ e-mail: \_\_\_\_\_

Thank you for joining us for the 2006 conference and exhibition.  
Edupro Group, LLC, P.O. Box 6053, McLean VA 22106. www.eduprogroup.com • conference@eduprogroup.com

#### EXHIBITOR TERMS AND CONDITIONS

Assignment: Exhibitor shall not assign or share the whole or any part of his/its assigned space without the express written consent of Edupro Group, LLC (Edupro), which Edupro may grant or withhold in its sole discretion.

Trade Show Admission: The show is a private event and admission is limited to registered conferees and exhibitors. A registration badge is required for access into the exhibit area.

Use of Space: Items exhibited at this show must be industry related. All sales and advertising activities must be confined to the exhibit booth or immediate areas and in a manner that does not impinge upon the contracted space of an adjacent exhibitor's area.

Liability: Upon signing the space reservation contract, exhibitor releases and agrees to indemnify Edupro Group, LLC, its officers, managers, contracted staff and agents and render them harmless from any suit or claim for property loss or damage or personal injury by whomsoever sustained, including exhibitor and its agents or employees, on or about the exhibitor's display space or arising out of exhibitor's participation in the exhibition, including such damage or injury resulting in part from the negligence of one or more of the aforementioned indemnities. Although all reasonable care to prevent loss, including security and fire protection, will be taken, Edupro Group will not be responsible for damage by fire, theft, accidents or other causes. It is recommended that each exhibitor carry insurance against damage or theft of the property exhibited since goods and property remain in the sole possession and custody of each exhibitor at all times.

Additional Terms and Conditions: All terms and conditions that appear on the Exhibition Space Reservation Agreement Form for the 15<sup>th</sup> National Conference & Exhibition on Transporting Students with Disabilities & Preschoolers are hereby incorporated as part of these Exhibitor Terms and Conditions. Edupro reserves the right to make such additional conditions, rules and regulations as it deems necessary to enhance the success of the Exhibition.

All local ordinances and requirements of Orange County, FL and the Doubletree Hotel at the entrance to Universal are automatically incorporated as conditions of the Space Reservation Agreement/Contract.

Edupro Group  
PO Box 6053  
McLean VA 22106

## Transporting Students with Disabilities & Preschoolers

15<sup>th</sup> National Conference & Exhibition

exclusive exhibition hours

unique mix of buyers

relationships strengthen

at this show

register now or

at [www.eduprogroup.com](http://www.eduprogroup.com)

# Transporting Students with Disabilities & Preschoolers

fifteenth national conference & exhibition

March 3-8, 2006, Orlando, FL

doubletree hotel at the entrance to universal orlando

exhibitor setup Monday, March 6 show! Tuesday, March 7

### Relationships Matter

Our returning exhibitors tell us this is the best trade show they attend year after year. Helping you strengthen relationships is our goal!

register now or at [www.eduprogroup.com](http://www.eduprogroup.com)

relationships strengthen at this show!

## good relationships mean good business

Our VIPs (Very Impressive Presenters) know that good relationships mean good business. So, our conference presenters are in the Exhibit Hall to help introduce attendees to you and to facilitate discussion at your booth. The result: enhanced ability to appreciate how your products and services can help.

We promise, you'll spend more quality time with each prospect, you'll shake the hands of our VIPs and conferees. Helping you build and strengthen relationships is our goal!

Our returning exhibitors tell us this is the best trade show they attend year after year.

### Product Profile:

Exhibitors have offered these products and services at prior shows: Routing and scheduling software... School buses/chassis...Lifts and ramps...Occupant restraints...Wheelchair tie-downs...Fire protection systems...Vehicle parts...Suspension systems...Climate control systems...Electronics...Health/first aid products...Transmission/brake systems...Emergency exit systems...Child safety seats...Electronic alerting devices...Vehicle conversions...Safety mirrors/products...Textiles...Consulting...Behavior management aids...Video productions...Safety vests...Wheelchairs and strollers...Association member benefits...Government agency services...and more!

Enjoy sunshine and salesmanship!

Please join us in Orlando, FL for the 15<sup>th</sup> National Exhibition of products and services for the special needs transportation community, serving students with disabilities, Head Start and the preschool population.

This dynamic national meeting and exhibition attracts a unique mix of people in numbers you won't find in any other single venue.

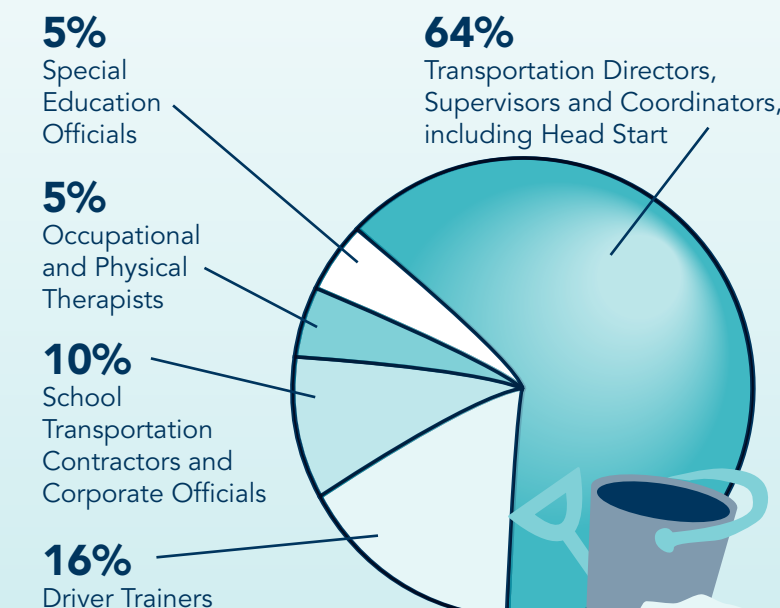
You have the undivided attention of school transportation professionals from across the nation. They come eager to learn from each other and from you! They know your products and services help make their jobs easier, and make pupil transportation safer and more efficient.

For five exclusive hours during the exhibition, you'll be visited by people who prepare specifications for special needs products and services. People who make the final decisions on purchases. People responsible for recommending purchases in school systems nationwide. Most transporters who attend have their hands and budgets on regular routes as well as special routes. So, bring your products and services with the entire student population in mind.

On behalf of the community that buys your products and services, and appreciates your participation in this annual event, I thank you for your support.

Cordially, Roseann Schwaderer  
Conference & Exhibition Chair

### Attendee Profile:



### Prior Exhibitors

Proven records stand out — yours and ours. In its 15th year, this exhibition has a proven record of introducing people who want to do business. Previous exhibitors, many repeating year after year, include the following companies:

- AC Industries
- A&E Transport
- AMA
- Amerex Corporation
- American Cooling Technology
- AMS Distributors
- AmTran Corporation
- Ankra International
- ARK National Foundation
- Athol Corp.
- BESI, Inc.
- B.F. Goodrich
- Blue Bird Body Corporation
- Blue Bird Service Parts
- Braun Corporation
- Bucks Wheel & Equipment Co.
- Bus Body Builders
- Bus Master Software
- Bus Parts Warehouse
- Bustop Alert
- Bus & Equipment Sales, Inc.
- Bus Vision
- Byram Bus Sales, Inc.
- Carpenter Manufacturing
- Carrier Transport A/C
- C.E. White Co.
- Collins Bus Corp.
- Columbia Medical
- Common Sense Management
- ComTrans
- Convaid, Inc.
- Corbeil
- Creighton Manning Inc./Versatrans
- Crisis Prevention Institute
- CRS Electronics
- Custom Radio Corp.
- Data Futures, Inc.
- Delco Electronics Corp.
- Diggs Enterprise
- Easy Way Safety Services
- Ecotran Systems, Inc.
- Edgar Inc.
- Education Compliance Group
- Education Consulting Service
- Education Logistics, Inc.
- E-Z-On Products of Florida, Inc.
- Gecko Microsolutions
- Gencorp – Designed Plastics
- Giardin Minibus
- Goin’ Mobile
- GKR Industries
- Hold Me Tight
- IC Corporation
- IMMI

- InPower
- InterMotive
- Products
- J.R. Kennedy Co.
- Kiddie Fenwell
- Kinedyne Corp.
- Kysor/Cadillac
- Laidlaw Transit
- Legal Routes
- Logisticare, Inc.
- Maxon Mobility
- Mid Bus, Inc.
- McNaughton, Inc.
- Mobile Video Products/
- Ultrak
- MOR/ryde International
- Mulholland Positioning Systems
- National Scientific Corp
- National Van Sales, Inc.
- Natl. Assn. for Pupil Transportation
- Natl. Assn. of State Directors of
- Pupil Transportation Services
- Natl. Highway Traffic Safety
- Administration
- Natl. School Transportation Assn.
- Navistar International
- NuSun, Inc.
- Oklahoma State University
- Omega Environmental Technologies
- One Stop Bus Stop, Inc.
- Ontira Communications
- Ortho Safe Systems International
- Pelham Transportation Services
- Pro Motion, Inc.
- Pupil Transportation Safety Institute

- Q’Straint
- Radio Engineering Industries, Inc.
- Rearscope of North America
- Ricon Corporation
- Rifled Air Conditioning
- SafeGuard
- Safe Haven by New Haven
- Safety Cross Mirror Co.
- Safety Systems & Controls, Inc.
- Safety Vision
- Sartin Services
- School Bus Fleet Magazine
- School Health Supply
- School Transportation News
- SCS Frigette
- Snug Seat, Inc.
- Strategies Training
- Systems, Inc.
- SturdiCorp.
- Sunrise Medical
- Sure-Lok Inc.
- Synovia
- Tex-Tech Industries, Inc.
- Thermo King Corporation
- Thomas Built Buses
- Thomas Hardware
- Tie Tech, Inc.
- Trans/Air Manufacturing
- Transfinder
- Transmatic, Inc.
- Transpec Worldwide
- Transportation Specialists
- Trapeze Group
- Tuit Enterprises
- Tumble Forms
- Unity School Bus Parts
- Universal Coach Parts, Inc.
- U.S. Bus Corp.
- U.S. Bus Manufacturing.
- VersaTrans Solutions, Inc.
- Visual Software - RoutePointe
- Webasto Thermosystems, Inc.

“The one-day exhibit with no interruptions was great. The crowd was great for five solid hours. Great job!”  
— *lift manufacturer*

“Lots of interest compressed into a 5-hour show.”  
— *routing software rep*

### Related Programs and Roadeo Sponsorships

The main conference is accompanied by three separate registration programs: Behavior Management Clinic; NHTSA’s Child Safety Seating Curriculum; and the Executive Briefing on Employee Relations Compliance Tools.

The conference is host to the 9th National Special Needs Team Safety Roadeo on Saturday, March 4. The Roadeo is managed and administered by Edupro and the National Association for Pupil Transportation. For information on sponsorships available for the Roadeo please contact JoAnn Martin at 845 351-5778 or email [jmartin@tuxedo.ouboces.org](mailto:jmartin@tuxedo.ouboces.org).

### Reserve Space Now!

Reserve exhibition space by filling out and mailing the Exhibit Space Reservation Agreement. Space is assigned on a first-reserved basis. A 50% deposit must accompany your reservation. Please reserve space by December 30, 2005.

#### Booth Space & Cost

10x10 Single	\$950	20x40 Large Bus	\$3,500
10x20 Double	\$1,800	20x20 Island	\$2,500
20x20 Small Bus	\$2,500		

Booth spaces include pipe and drape, ID sign, one chair, one 6 foot draped table. Bus spaces include ID sign, one chair and one 6 foot draped table. The exhibit hall is carpeted. A packet containing information on additional furnishings you may wish to order, and information on shipping procedures, will be mailed to exhibitors in January.

#### All Exhibitors Will Receive

With your space reservation you will receive the following accompaniments which will help you benefit from exhibiting and supporting special needs transportation:

- A minimum of two full registrations to the main conference, which includes admission to all conference food functions. Registration awards depend on size of space purchased.
- A copy of the Speakers’ Notebook, a \$45 value.
- One-time use of the list of attendees following the show.

#### Exhibition Schedule

The exhibition will be held in the Universal Center of the conference hotel, the Doubletree at the Entrance to Universal Orlando.

Bus set up	Monday, March 6, 9 am to Noon
Booth set up	Monday, March 6, Noon to 5 pm
Trade Show	Tuesday, March 7, 8 am to 1 pm
Dismantling	Tuesday, March 7, 1 pm to 5 pm

#### Exhibitor Registration/Badges

Registration and badges will be available at the Conference Registration Desk at the Doubletree Hotel at the Entrance to Universal Orlando, 5780 Major Blvd., Orlando. Badges must be displayed to enter the trade show and must be worn at all times during the show. You will also need to wear your badge if you plan to attend any conference session. The Conference Registration Desk will be open for exhibitor registration on Friday, March 3 from 1 pm to 6 pm; Saturday and Sunday from 7 am to Noon; and Monday and Tuesday from 7 am to 5 pm.

### Hotel /Travel Information

The Doubletree Hotel at the Entrance to Universal Orlando is located at 5780 Major Boulevard, Orlando, FL 32819. The phone number for reservations is 800 327-2110. A block of rooms is being held for our attendees at a discounted rate of \$122. You must mention the Transporting Students Conference or Edupro Group by name to get the special room rate. Reservations must be made by 8 am February 1, 2006 to receive that discounted rate.

Please reserve early and obtain your confirmation number for your lodging.

#### Special Needs

Please notify the conference in advance of any special physical needs you have with regard to meeting rooms or exhibit area. Those with special needs in sleeping rooms should so advise the hotel when making reservations.

## Stand Out!

You’ve earned the limelight! Stand out with a sponsorship! Sponsorships attract attention and spread good will! Extend your hospitality and increase your visibility with a sponsorship listed below - or suggest one we haven’t thought of. Your sponsorship will be acknowledged prominently in the conference program booklet. Here are a number of prime sponsorship opportunities available to help you stand out in our crowd.

Conference Notebook	\$4000
3Rs for Drivers & Attendants	<b>SOLD</b>
Insert in Speakers’ Notebook	\$ 500
Early Bird Hospitality Hour	\$ 500
Beverage Break	\$ 700
Continental Breakfast	\$2700
Conference Luncheon	\$5000
Workshop Luncheon	\$3500
Bags	\$1000

Partial sponsorships may be available upon request. Deadline for selecting sponsorships is January 1, 2006. Please designate your selection on the space application form or contact [conference@eduprogroup.com](mailto:conference@eduprogroup.com).

## Transporting Students with Disabilities & Preschoolers 15th National Conference & Exhibition

**Doubletree Hotel at the Entrance to Universal Orlando, 5780 Major Blvd., Orlando FL 32819**  
**Conference: March 3-8, 2006 Exhibition, March 7, 2006; setup March 6**

EXHIBIT SPACE RESERVATION AGREEMENT  
 Please type or print legibly; information provided is the basis for your listing in the conference program.

For more information, or to submit your completed form, contact Edupro Group, PO Box 6053, McLean VA 22106; phone (703) 288-4088; fax (703) 288-4089; email [conference@eduprogroup.com](mailto:conference@eduprogroup.com). Full exhibition and conference details are available at [www.eduprogroup.com](http://www.eduprogroup.com).

#### 1. General Information

Company Name: \_\_\_\_\_ Type of Business \_\_\_\_\_

Address: \_\_\_\_\_

City: \_\_\_\_\_ State: \_\_\_\_\_ Zip: \_\_\_\_\_

Phone: \_\_\_\_\_ Fax: \_\_\_\_\_ e-mail: \_\_\_\_\_

Designee to receive exhibitor materials; space assignments, etc.: \_\_\_\_\_

Designee’s address, phone and e-mail, if different than above: \_\_\_\_\_

Describe products/services (20 words or less) \_\_\_\_\_

#### 2. Space Reservation & Fees (Check your selection)

___ Single booth (10x10)	\$ 950	___ Small bus space (20x20)	\$2500	___ Island (20x20)	\$2500
___ Double booth (10x20)	\$1800	___ Large bus space (20x40)	\$3500		

Assignments are made on a first-reserved basis. Reservations must be accompanied by a 50% deposit. Full payment must be received by December 30, 2005

#### 3. Exhibitor/Conference Registrants

You may register 2 persons for the conference/exhibition if you have reserved a single booth or a small bus space. You may register 3 persons for the conference/exhibition if you have reserved a double booth or large bus space. Additional registrations for the exhibit hall only (no conference notebook) are available for \$75 each.

(1) Badge Name: \_\_\_\_\_ Additional exhibit hall only registrants @ \$75 each:

Title: \_\_\_\_\_ Badge Name: \_\_\_\_\_

(2) Badge Name: \_\_\_\_\_ Title: \_\_\_\_\_

Title: \_\_\_\_\_ Badge Name: \_\_\_\_\_

(3) Badge Name: \_\_\_\_\_ Title: \_\_\_\_\_

Title: \_\_\_\_\_ (Proceed to reverse side)